



WORK SAFE, WORK SMART WITH...

HOT•STOP® 1500

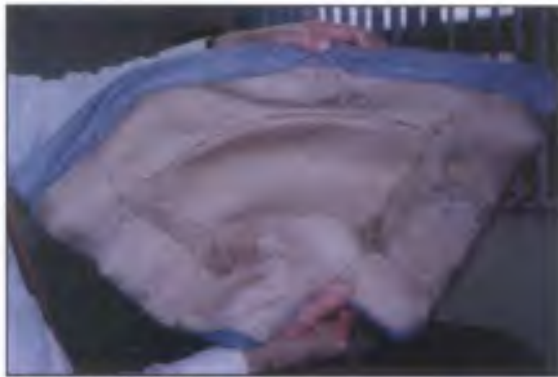
HIGH TEMPERATURE FABRIC



AVAILABLE UP TO 72" WIDE



STEAM TURBINE BLANKETS



SEWN REMOVABLE BLANKETS



REMOVABLE & REUSABLE BLANKETS - 5 YRS. SERVICE

HOT•STOP 1500 is a specially treated woven fiberglass fabric, having excellent flexibility, stability, and abrasion resistance for service applications over 1200° F.

HOT•STOP 1500 contains a special finish that is formulated to provide superior resistance to sparks and heavy metal splash. HOT•STOP was initially developed to meet the harsh requirements of the Electric Utility Industry, and has now been widely accepted by all industrial markets.

TYPICAL USES

- **Protective Encapsulation for Thermal Blanket Insulation (Removable & Reusable)**
By using HOT•STOP as a containment for glass blankets, reuse is assured and reduction of airborne fibers is attained.
- **Weld Safety Blankets and Curtains**
HOT•STOP provides excellent protective curtains and blankets for weld safety heat treatment and foundry heat shields. The strong twill weave and the 72" widths provide economical protection.
- **Gasketing, Expansion Joints**
HOT•STOP textiles are excellent for fabricating tadpole seals, flange gasketing and expansion joints.
- **Fire Fighting Curtains**
HOT•STOP Fabrics are fabricated for highrise building firefighting to prevent backdrafts.

HOT-STOP® 1500 SPECIFICATIONS

STYLE NO.	OZ / YD ²	WIDTH (INCHES)	ROLL LENGTH (YDS)	ROLL WEIGHT (LBS)	THICKNESS (INCHES)	BREAK STRENGTH LBS / INCH	TABER ABRASION RESISTANCE
1500 L	27.5	40	50	95	.050	W-400 F-393.3	1240
		60		144			
		72		172			
1500 M	30.5	40	50	106	.080	W-400 F-400	1900
		60		159			
		72		191			
1500 H	40.5	40	25	70	.100	W-400 F-400	4000
		60		105			
		72		127			

HOT-STOP® fabrics meet or exceed the following specifications.

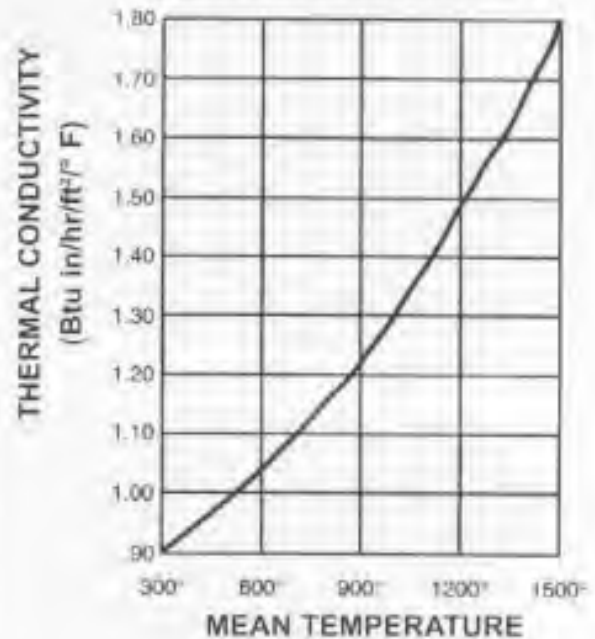
- Listed by Underwriters Laboratories UL 214
- UL 724 Flame Spread is 0, Fuel Contributed is 0, Smoke Density is 0
- US Coast Guard Spec 184.009
- US Military Spec MIL-C-20079
- US Military Spec MIL-I-24224
- Meets or exceeds NFPA Spec No. 701
- Exceeds European EN 407 standards
- Meets NRC specifications

Average Properties of HOT-STOP® 1500
Physical

Specific Gravity	2.54
Moh Hardness	6.5
Contact Angle w/ Water, Degrees	0
Coefficient of Friction w/ Glass	1.0
Moisture Absorbency (surface), percent up to	0.3
Moisture Regain	None
Melting Temperature	2080° F

Mechanical

Tensile Strength, psi	
@ 72° F	500,000
@ 700° F	380,000
@ 1000° F	250,000
Tensile Modulus of Elasticity, psi, @ 72° F	10.5 X 10 ⁶
Hysteresis	None
Creep	None
Elongation at Break, percent	4.8
Elastic Recovery, percent	100

**HOT-STOP® 1500
Typical Thermal Conductivity**

TESTING

HOT-STOP 1500 H exceeds the harsh US Navy and Con Edison test for weld fabric qualification. HOT-STOP was subjected to cut steel 1/2" thick by 12" long dropped on unsupported fabric from a height of 18". The test requires 10 cuts with no penetration. HOT-STOP passed easily and retained much of its original tensile strength.

PROPANE TORCH TEST

HOT-STOP H was placed 2" from flame of propane torch at a 90° angle at temperatures up to 2000° F. Time in seconds to penetrate - 1800.